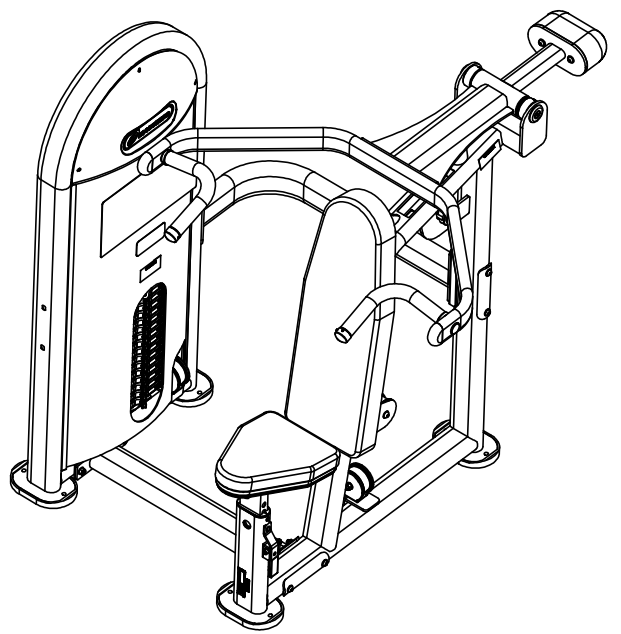
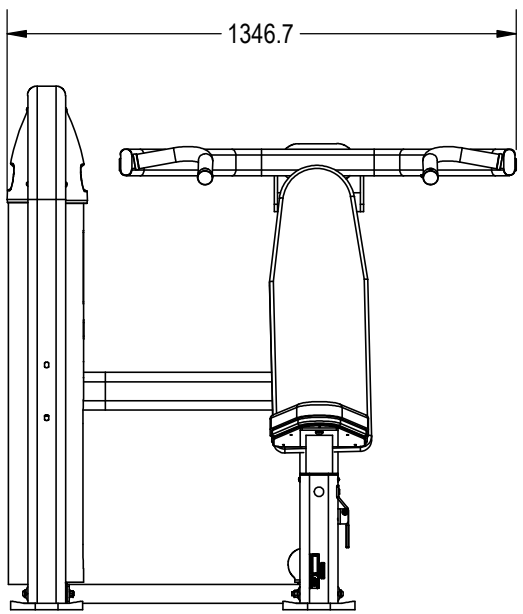
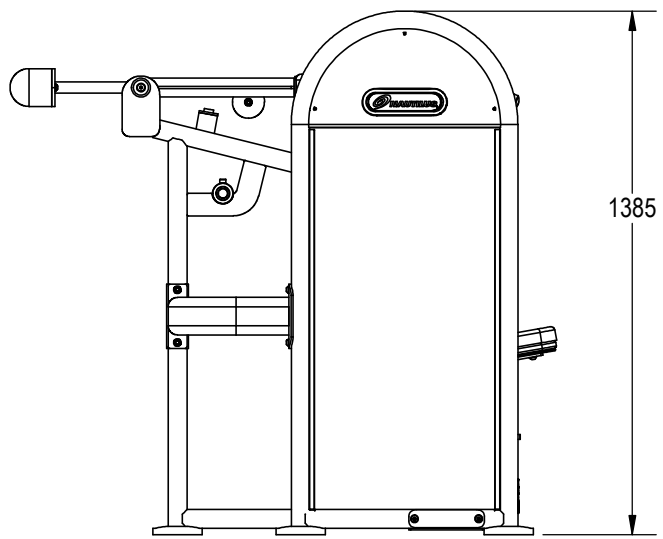
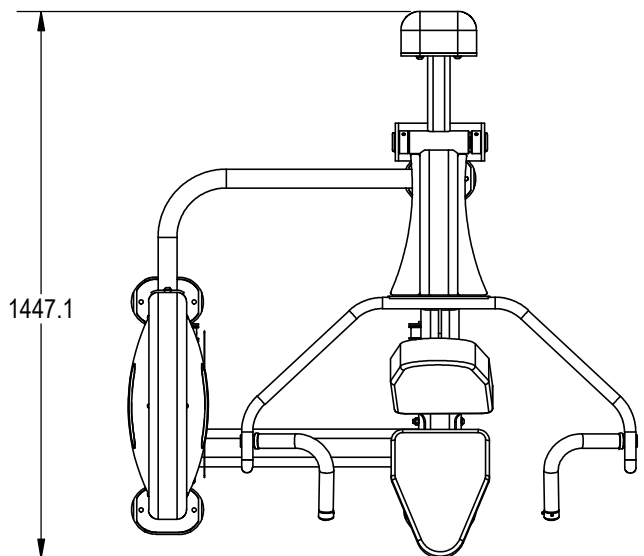


NOTES:

1. ASSEMBLE AND INSPECT PER SOP 620-7918..
2. INSTALL Kg STICKER AND AFFIX Lb STICKER TO INSIDE OF SHROUD WITH TAPE.
3. COLOR DICTATED BY THE SALES ORDER. REFERENCE THE MACHINES BOM FOR COMPONENTS CONTAINING -XX, -00XX AND -XXXXX.
 - a. COLOR: -XX COLOR DESIGNATOR AS SPECIFIED IN SOP 620-8222.
 - b. THE -XX CAN RESULT IN ONE COLOR FOR THE METAL SHROUD AND A DIFFERENT COLOR FOR THE METAL FRAME ALSO WITH A -XX LISTED ON THE BOM.
 - c. THE -00XX IS THE COLOR DESIGNATOR FOR UPHOLSTERY.
 - d. THE 5TH DESIGNATOR: "X" WITHIN -XXXXX DEFINES THE HEAD STRAP OR CUSTOM PRODUCTS BRAND. THIS IS SPECIFIED ON SALES ORDERS.
 - e. THE -XXXXX IS CREATED BY COMBINING THE -XX, -00XX AND THE 5TH DESIGNATOR.
 - f. ALL X'S SHOULD BE DEFINED ON THE SALES ORDER.

REVISIONS HISTORY				
REV.	DATE	DESCRIPTION	ECO	BY
A	8/4/2016	INITIAL RELEASE	15480	AM



DOCUMENT STATUS:

NOTICE OF PROPRIETARY INFORMATION
THIS DOCUMENT SHALL NOT BE REPRODUCED NOR SHALL THE INFORMATION CONTAINED HEREIN BE USED BY OR DISCLOSED TO OTHER EXCEPT AS EXPRESSLY AUTHORIZED BY CORE HEALTH & FITNESS, LLC.

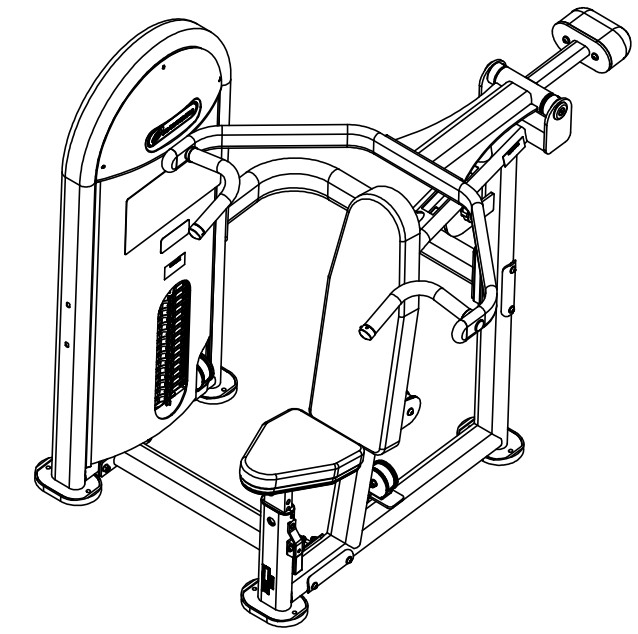
CLASS OF WORK	UNLESS OTHERWISE SPECIFIED DIMS ARE IN mm. TOLERANCES FOR MEASURE OF LENGTH ARE:							ANGLES = ±2°		
	0.5 to 3	> 3 to 6	> 6 to 30	> 30 to 120	> 120 to 400	> 400 to 1000	> 1000 to 2000	> 2000		
FINE	±0.05	±0.05	±0.1	±0.15	±0.2	±0.3	±0.5	----		
MEDIUM X	±0.1	±0.1	±0.2	±0.3	±0.5	±0.8	±1.2	±2		
COARSE	±0.2	±0.3	±0.5	±0.8	±1.2	±2	±3	±4		
VERY COARSE	----	±0.5	±1	±1.5	±2.5	±4	±6	±8		

MATERIAL SEE BOM	
FINISH SEE NOTES	
VENDOR: N/A	P/N: N/A

THIRD ANGLE PROJECTION		
DRAWN	INITIAL AM	DATE 8/4/16
CHECKED		
APPROVED		
	U.O.M.	MM

CORE HEALTH & FITNESS, LLC 4400 NE 77th Ave., Suite 300 Vancouver, WA 98662		
CORE PART NO	REV	
NL-S4100-29AGS	A	
TITLE NL,SSS,SHOULDER PRESS,LNL		
SCALE: 1:20	SHEET 1 OF 3	SHEET SIZE: B

9		8		7		6		5		4		3		2		1			
ITEM NO.		PART NUMBER		DESCRIPTION		QTY.		ITEM NO.		PART NUMBER		DESCRIPTION		QTY.					
J		1		050-5457		Label, S/N, Non-Powered, Primary, Core H&F		1		45		730-1104		NUT, M10, NYLON PATCH, SS		15		J	
I		2		730-0194		PAD, SEAT, IN-B7201		1		46		730-1109		SCREW, M10X80, BH, SS		3		I	
H		3		730-0216		PAD, FOOT, FRAME, WELDED		4		47		730-1112		SCREW, M10x130, BH, SS		6		H	
G		4		730-0233		SHROUD, REAR, IN-S5100		1		48		730-1118		SCREW, M10, BHC, HK, SS		2		G	
F		5		730-0236		PIN, BELT ANCHOR		2		49		730-1119		SCREW, M10x35, BH, SS		4		F	
E		6		730-0237		SCREW, M10x30, SHS, SS		2		50		730-1121		SCREW, M10X45, BHC, SS		2		E	
D		7		730-0246		PAD, BACK REST, IN-S2100		1		51		730-1122		SCREW, M10X63, BHC, SS		7		D	
C		8		730-0292		CAP, ARMS, IN-S2100		2		52		730-1138		SCREW, M8X20, BHC, SS		6		C	
B		9		730-0385		LABEL, CAUTION, PINCH POINT		2		53		730-1155		SCREW, 10-32X3.2, SET		4		B	
A		10		730-0550		COUNTERBALANCE, IN-S4100		1		54		730-1334		SHROUD, LNL, S4100		1		A	
		11		730-0562		BUMPER, STACK, 60MM		2		55		730-1399		WSA-LNL, 180LB, 15H		1			
		12		730-0565		CAP, END, HANDLE		2		56		730-1491		LABEL, INSTRUCTIONS, LOCK N LOAD		1			
		13		730-0656		CAP, 50MM OD		2		57		730-7230-XXX		STICKER, PLACARD, INSTRUCTION, LLSF, NAUT.		1			
		14		730-0662		WEIGHT STACK, GUIDE RAIL		2		58		731-0335		STICKER, MADE IN CHINA, IP		1			
		15		730-0673		ISO 15 RBB - 1025 - 14, SI, NC, 14_68		2		59		731-7311		STICKER, NAUTILUS, DECO, 45MMX191MM		2			
		16		730-0680		BELT, GUIDE, M19X39		1											
		17		730-0702		SHROUD, UPPER		2											
		18		730-0721		PULLEY, 75MM		6											
		19		730-0778		BELT		1											
		20		730-0819		WEIGHT STACK, FRAME		1											
		21		730-0820		CROSSBEAM, UPPER, FRAME		1											
		22		730-0821		ASSY, MAIN FRAME		1											
		23		730-0822		ASSY, SEAT POST, IN-S4100		1											
		24		730-0823		CROSSBEAM, LOWER, FRAME		1											
		25		730-0845		SHROUD, MOUNTING, U-STYLE, CLIP		6											
		26		730-0846		SHAFT, 25MM X 234		1											
		27		730-0871		SCREW, M10X30, FHM, HK, SS		2											
		28		730-0885		NUT, M6, JAM, HEX, SS		2											
		29		730-0891		SCREW, M8X30, SHS, SS		1											
		30		730-0892		SCREW, M8X55, SHS, SS		1											
		31		730-0896		SCREW, M8X16, SET, SS		4											
		32		730-0899		SCREW, M6X12, BHC, SS		2											
		33		730-0907		WASHER, M10, SPLIT, LOCK, SS		2											
		34		730-0908		WASHER, M10, FLAT, SS		39											
		35		730-0910		WASHER, M8, BELLEVILLE, SS		8											
		36		730-0911		ADJUSTMENT, HANDLE, COMPRESSION SPING		1											
		37		730-0913		BUMPER		1											
		38		730-0930		ASSY, EXTENSION, ADJUSTMENT, HANDLE		1											
		39		730-0935		ASSY, ADJUSTMENT, HANDLE, END, SLEEVE		1											
		40		730-0936		ASSY, TUBE, INSERT, SLEEVE		2											
		41		730-0960		CAP, HANDLE, GRIP, 33MM		2											
		42		730-1072		LEVERAGE ARM, U-SHAPE, IN-S4100		1											
		43		730-1074		LEVERAGE ARM, RUBBER, HAND GRIP, SLEEVE		2											
		44		730-1103		NUT, M8, NYLON PATCH, SS		1											



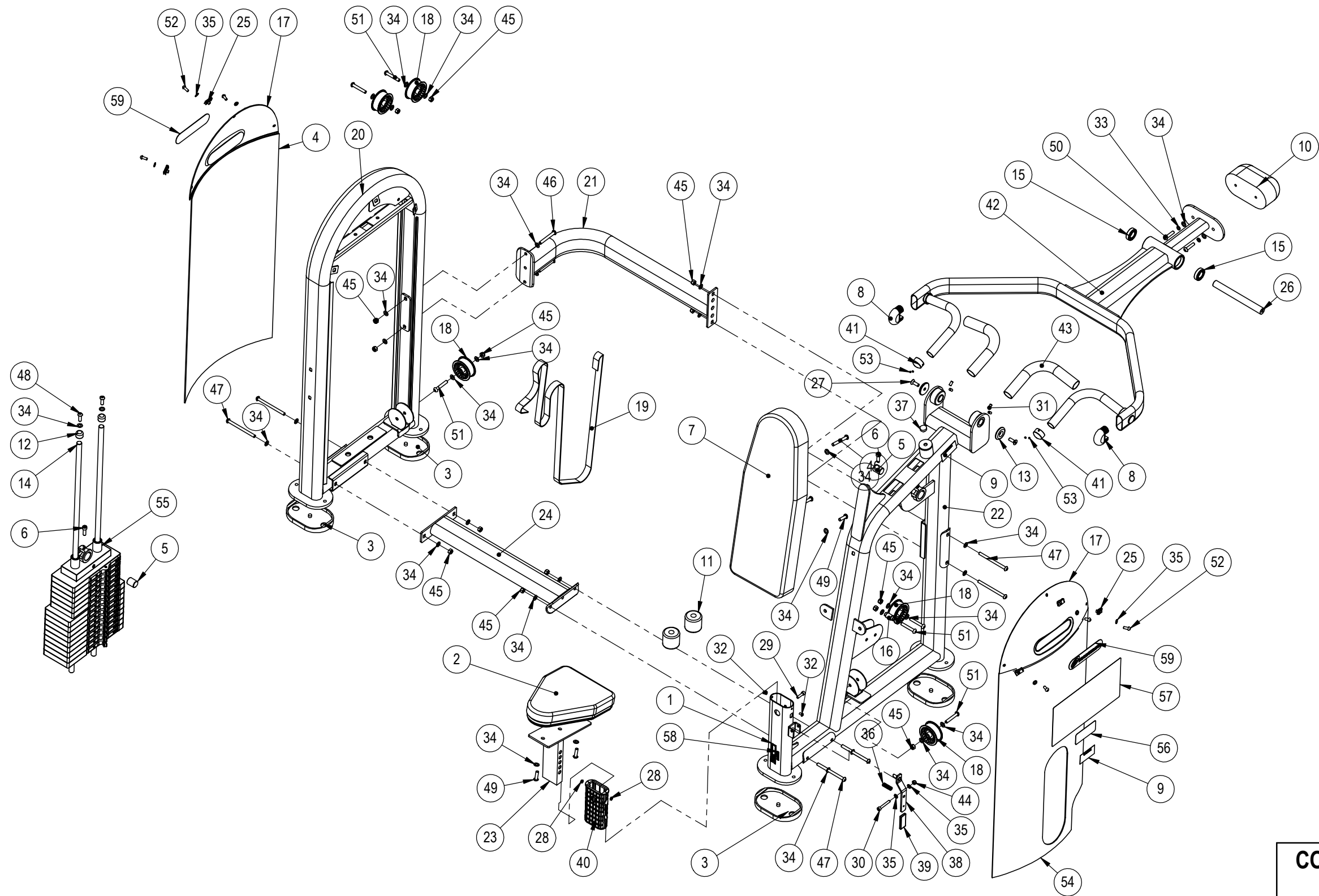
REPLACEMENTS				
Item	StarTrac p/n	Description	Inray p/n	Qty
55	730-0319	SHROUD, FRONT, IN-S4100	IN-S41000900	1
7	730-0292	CAP, ARMS, IN-S2100	IN-S21003000	2
2	730-0216	PAD, FOOT, FRAME, WELDED	IN-B75030900	4
1	730-0194	PAD, SEAT, IN-B7201	IN-B72012000	1
3	730-0233	SHROUD, REAR, IN-S5100	IN-S10121500	1
N/A	730-0321	HEAD STRAP	N/A	1
19	730-0229	KIT, PULLEY REPLACEMENT, 76 MM, SINGLE	IN-S51101000	1
			PNLM10*63A2-70	1
			NM10A2-70	1
20	730-0215	KIT, BELT REPLACEMENT	GB9510A2-70	2
			IN-S21002800	15.5FT
			IN-S10121700	2
N/A	730-0187	KIT, HARDWARE, IN-S4100	GB70M10*30A2-70	1
			N/A	N/A
			IN-D10132800	1
18	730-0228	KIT, UPPER SHROUD	PNLM8*20A2-70	3
			GB958A2-70	3
			IN-B75021300	2
42	730-0156	ASSY ENDCAP, 32MM, ALUMINUM	IN-B75021600	2ft
			YZGB7710-32*3.2DS2	4
			IN-B72010600	1
39	730-0251	KIT ADJUSTMENT HANDLE, IN-D1014	IN-B72011400	1
			HF1642303	1
			GB70M8*55A2-70	1
41	730-0213	KIT, SEAT SLEEVE, IN-B7502	GB958A2-70	2
			IN-B72011700	2
			GB41M6A2-70	2
11	730-0322	KIT, COUNTERBALANCE, IN-S4100	GB818M6*12A2-70	2
			IN-S41000700	1
			PNLM10*45*45A2-70	2
			GB9510A2-70	38
			GB9310DG12	2

CORE HEALTH & FITNESS, LLC
4400 NE 77th Ave., Suite 300
Vancouver, WA 98662

CORE PART NO: **NL-S4100-29AGS** REV: **A**

TITLE: **NL,SSS,SHOULDER PRESS,LNL**

SCALE: 1:20 SHEET 2 OF 3 SHEET SIZE: B



CORE HEALTH & FITNESS, LLC		
4400 NE 77th Ave., Suite 300 Vancouver, WA 98662		
CORE PART NO	NL-S4100-29AGS	REV A
TITLE NL,SSS,SHOULDER PRESS,LNL		
SCALE: 1:20	SHEET 3 OF 3	SHEET SIZE: B